



WISTERIA LODGE 3

The **Wisteria Lodge 3** is a 20ft wide model with an expansive living space making a real statement – inside and out.

The open plan lounge with its twin French doors features freestanding sofas and

plenty of built-in storage space for all those holiday essentials.

The dining area has freestanding table and upholstered chairs which match the optional lounge footstool.

For total peace of mind all our holiday homes and lodges come with a **COMPREHENSIVE WARRANTY**

See page 7 for further details



The **Wisteria Lodge 3** has large kitchen area with everything at your fingertips. The electric oven and 4 burner hob are paired with a chimney style extractor and an integrated fridge/freezer and microwave come as standard.

The **Atlas Wisteria Lodge 3** has a sizeable utility room with space for an optional freestanding washing machine*. Just throw your clothes in when you return from a day out and relax with a well deserved glass of wine.

**Photograph shows optional integrated appliance.*



The **Wisteria Lodge 3** illustrated is the 40ft x 20ft – 2 bed. The model shown is finished in stone rigid vinyl cladding with white PVC windows and doors.

Note: Deluxe bedding set, lounge scatters, TV and interior accessories are for display purposes only.





The **Wisteria Lodge 3** master bedroom has a kingsize bed and two large bedside tables with stylish wall lights above on the subtle forest-themed feature wallboards. The bedroom is completed by a walk-in wardrobe meaning you won't be short of storage space.





The second bedroom in the **Wisteria Lodge 3** also includes the feature wallboard and another walk-in wardrobe creating hanging and drawer space for the whole family.

After a hot summer's day out enjoying the best that the countryside can offer, you can head back for a relaxing bath or refreshing shower.

The 2 and 3 bedroom versions feature main bathroom with full sized bath and shower over. The second bedroom ensuite also comes complete with walk-in shower.

Both bathrooms in the **Wisteria Lodge 3** include fitted wash basin, shower cubicle, WC and extractor fan.



Forget braving the traffic to top up that tan on the beach – it's right outside your door. Just don't forget plenty of sun screen!



Model illustrated 40ft x 20ft – 2 bed

A Lounge with 2 freestanding sofas with designer scatter cushions and twin front French doors.

B Dining Area with freestanding dining table and soft upholstered luxury dining chairs. Why not complete the look with the matching optional footstool.

C Kitchen with electric oven and 4-burner hob complete with extractor; integrated fridge/freezer and microwave.

D Utility Room with sink and space for washing machine (available as an optional extra).

E Ensuite with electric shower, built in washbasin, WC and extractor fan.

F Master Bedroom with kingsize bed, 2 bedside tables and large walk-in wardrobe.

G Twin Bedroom with two 3ft single beds, bedside cabinet and spacious walk-in wardrobe.

H Main Bathroom with full size bath with shower over, built in washbasin, WC and extractor fan.



STANDARD FEATURES

Lounge

Two freestanding suites ✓

Kitchen

Electric oven ✓

4 burner gas hob with electric extractor hood ✓

Utility room with space for washing machine ✓

Integrated fridge freezer ✓

Integrated microwave ✓

Space for full size dishwasher ✓

Dining Area

Freestanding dining table and chairs ✓

Bathroom(s)

Double ensuite bedrooms ✓

Full size bath in main bathroom ✓

Shower over bath in main bathroom ✓

Ensuite to master bedroom ✓

Extractor fans to both bathrooms ✓

Master Bedroom

Walk in wardrobe ✓

Lift-up storage double bed ✓

Bedroom(s)

Walk in wardrobe ✓

3ft single bed to twin bedroom(s) ✓

Throughout

Central heating ✓

Extra insulation ✓

Sockets with USB port ✓

Exterior

Pre galvanised chassis ✓

Double glazing ✓

Rigid vinyl cladding ✓

Twin French front doors ✓

Exterior light ✓

Tongue and groove feature ceiling ✓

Low energy lighting ✓

Sockets with USB port ✓

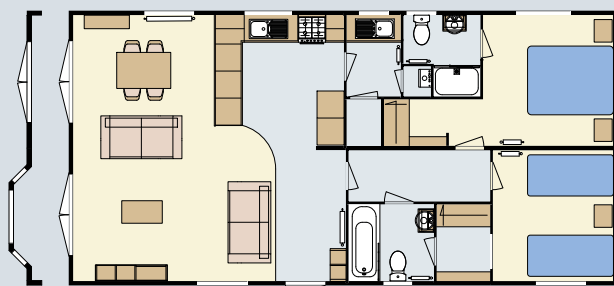
POPULAR OPTIONS

| | |
|--|--|
| Ultrawarm insulation | |
| BS3632 residential specification | |
| Downlighters under front eaves x 4 | |
| Front bay window to lounge in lieu of French doors | |
| Fully galvanised chassis | |
| Upgrade to graphite windows | |
| Environmental colours | |
| Environmental colours complete with graphite windows/doors | |
| Canexel cladding white windows | |
| Canexel cladding coloured windows | |
| Timber cladding oak windows | |
| Freestanding washer/dryer* | |
| Freestanding washing machine* | |
| Integrated washer/dryer* | |
| Integrated washing machine* | |
| Integrated full size dishwasher* | |
| Extra dining chairs | |
| Wall mounted TV point in lounge | |
| Pull out bed to lounge | |
| Lounge footstool | |
| Lounge scatter cushions | |
| Coffee table | |
| TV points & co-ax to bedrooms | |
| Standard bedding set | |
| Deluxe bedding set | |

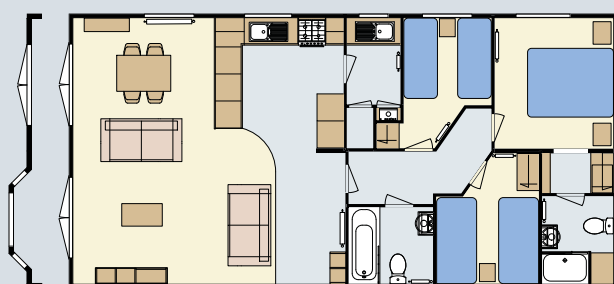
*Only 1 full size appliance per model in kitchen.

Maximum 2 appliances per model

FLOOR PLANS



40 x 20 – 2 bedroom/4 berth



40 x 20 – 3 bedroom/6 berth

Please take a moment to choose which options you would like to be included in your new Wisteria Lodge.

You can tick the appropriate box, which will help you specify your new holiday home.

Please see the matrix on page 52 for a comprehensive list of options.