

THE LANGHAM



HIGHLIGHT

Unique 5 star hotel  
central living layout

# THE LANGHAM

## HIGHLIGHT

Feature LED cabinet lighting to kitchen



## HIGHLIGHT

Illuminated mirror backed cocktail cabinet



HIGHLIGHT

Super king bed in  
both bedrooms



Master Bedroom

THE LANGHAM





## THE CARNABY STANDARD

- Carnaby Comfort mattresses
- Comfortable 'Carnaby Sit' seating
- 7-foot-high walls with vaulted ceilings
- Colour co-ordinated scatter cushions to sofa
- USB charging sockets in lounge and bedrooms
- Externally vented cooker hood extractor
- Exterior lighting to doors
- Voiles to selected windows
- Super soft underlay to all carpeted areas
- Utility storage cupboard

## FEATURES

### EXTERIOR

- Two tone Matt Champagne with Anthracite Grey cladding
- Coloured uPVC double glazing
- Fully galvanised chassis
- Reversible tow bar facility
- Exterior light

### HEATING & INSULATION

- External pipe lagging
- 'A' rated Vaillant combi boiler, wet radiators with thermostatic valves
- 50mm fibreglass wall insulation
- 120mm fibreglass roof insulation with vapour barrier
- Double foil under-floor insulation
- uPVC double glazing

### LOUNGE & DINING

- Free standing dining table with padded high back dining chairs
- Corner sofa with scatter cushions
- Bluetooth lounge ceiling speakers
- Wall mounted TV point (HDMI, double mains socket, aerial co-Axial)
- Feature coffee table with 4 foot rests
- Electric flame effect wood burning stove
- Carnaby crafted cocktail cabinet

### KITCHEN

- Fan assisted electric oven and grill
- Five burner gas hob
- Feature cooker hood extractor
- Integrated microwave oven
- Integrated dishwasher
- Integrated fridge/freezer
- Black resin sink and drainer
- Feature lighting to wall units and under counters
- Venetian blind

### BEDROOMS

- Carnaby Comfort mattresses
- Super King bed in master bedroom
- Super king split base divan with zip-lock mattress to second master bedroom
- Storage beds
- TV points to both bedrooms
- Feature upholstered headboard with bed-side lighting in master bedroom
- Wardrobes, bedside tables, dressing table and stool to both bedrooms
- Bedside USB charging sockets

### BATHROOMS

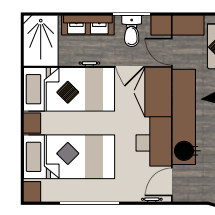
- Extractor fans to both bathrooms
- Both bathrooms with thermostatically controlled showers
- Heated towel rails to both bathrooms
- Dual sculpted counter top wash basins with vanity unit
- Carnaby crafted cabinets and storage units

## FLOOR PLANS



### 41 X 13 2B

**Bed Sizes:** Super king 1905mm x 1830mm & 2 x Single 1905mm x 915mm which zip and link to make a Super king 1905mm X 1830mm



### 41 X 13 2B Second Master in Twin Configuration

**M** Microwave **O** Oven **B** Boiler **D** Dishwasher **F** Fridge Freezer **W** Washing Machine\*

\*Optional extra



## STRUCTURAL THERMAL RATING

Rating is based on 41 x 13 - 2B when fitted with optional Ultra Warm Plus.

**For more information see page 59.**

# THE CARNABY STANDARD



## INTRINSIC QUALITY

### HEAD SPACE

Every Carnaby uses space to the maximum. 7-foot-high walls and vaulted ceilings are present across our range, giving you the space to live and entertain without compromise.

### CABINERY & JOINERY

First-class craftsmanship is at the heart of our Holiday Homes. You'll find stylish, well designed, solid furniture, crafted to withstand the rigours of everyday life.

### FIXTURES & FITTINGS

We understand quality. We specify components and fixtures in line with The Carnaby Standard. Flick a switch, draw the curtains or open a drawer knowing time has been taken to ensure every interaction with your holiday home echoes quality.

### QUALITY FEATURES

Appliances you can trust. We specify and fit branded white goods to all our kitchen areas - you will see brands you know and trust from your own home.

### THERMAL RATINGS

Carnaby takes energy efficiency very seriously and by specifying either an Ultra Warm or Ultra Warm Plus upgrade you can celebrate best in industry thermal efficiencies. We only install domestic quality heating systems to keep you warm on a chilly evening and with a flow rate capable of running piping hot water to both showers simultaneously.