



OAKDALE CENTRE LOUNGE

HIGHLIGHT

Central living layout  
with bedrooms  
at both ends



**HIGHLIGHTS**  
The optional Vision Pack conceals the TV behind the fireplace and gives an extra window to let light flood in.  
Feature sofa with pull out daybed, adjustable backrests and stools concealed within the arm rest

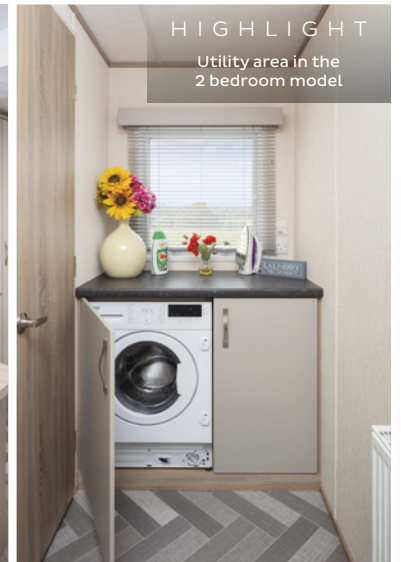




**HIGHLIGHT**  
Kitchen styled with contrasting greys and light oak colour ways



Standard TV unit



**HIGHLIGHT**  
Utility area in the 2 bedroom model

# OAKDALE CENTRE LOUNGE

## HIGHLIGHT

King size bed with coordinating headboard and overhead cabinets



Master Bedroom



Bathroom



En-suite



Master Bedroom



Second Bedroom



## THE CARNABY STANDARD

- Carnaby Comfort mattresses
- Comfortable 'Carnaby Sit' seating
- 7-foot-high walls with vaulted ceilings
- Colour co-ordinated scatter cushions to sofa
- USB charging sockets in lounge and bedrooms
- Externally vented cooker hood extractor
- Exterior lighting to doors
- Voiles to selected windows
- Super soft underlay to all carpeted areas
- Utility storage cupboard

## FEATURES

### EXTERIOR

- Barley White aluminium cladding
- Reversible tow bar facility
- French doors
- Exterior lighting to door

### HEATING & INSULATION

- External pipe lagging
- 25mm fibreglass wall insulation

### Available with optional Ultra Warm upgrade which includes;

- 'A' rated Vaillant combi boiler, wet radiators with Thermostatic Valves
- External Pipe Lagging
- 50mm Fibreglass wall Insulation
- 120mm Fibreglass roof Insulation with Vapour Barrier
- Double Foil under-floor insulation
- uPVC Double Glazing

### LOUNGE & DINING

- Carnaby crafted wall unit with inset fire and TV space
- Feature sofa with pull out daybed, adjustable backrests and stools concealed within the arm rest
- Wall mounted TV point (HDMI, Single mains socket, aerial co-axial)
- Free-standing dining table with padded high back dining chairs
- Coffee table
- Flame effect electric fire
- Optional vision pack reveal TV and extra window

### KITCHEN

- Gas oven & grill (twin cavity) with four burner hob
- Integrated fridge/freezer
- Textured stainless steel sink, drainer and mixer tap
- Venetian blind

### BEDROOMS

- Carnaby Comfort mattresses
- King size bed in master bedroom
- Feature mirrors
- Feature upholstered headboard
- Wardrobes, bedside tables and dressing table to main bedroom
- Bedside USB charging sockets

### BATHROOMS

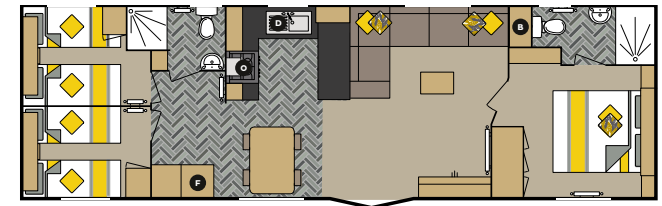
- Family bathroom with thermostatically controlled shower
- En-suite bathroom with thermostatically controlled shower
- Mirrored cabinet in both bathrooms
- Porcelain pedestal wash basins
- Venetian blinds in bathroom and en-suite

## FLOOR PLANS



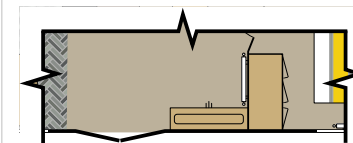
38 X 12 2B

Bed Sizes: King size 1905mm x 1525mm & 2 x Single 1830mm x 915mm



39 X 12 3B

Bed Sizes: King size 1905mm x 1525mm, 2 x Single 1830mm x 685mm & 2 x 1830mm x 760mm



### CL VISION PACK

O Oven   
 B Boiler   
 D Dishwasher\*   
 F Fridge Freezer   
 W Washing Machine\*

\*Optional extra



## STRUCTURAL THERMAL RATING

Rating is based on 39 x 12 - 3B when fitted with optional Ultra Warm Plus.

For more information see page 59.