



## IMAGE 9

The focal point of the **Image 9** lounge is the stunning brushed metallic feature wall with a contrasting black nickel electric fire surround. Including a luxurious 3-seat sofa, two armchairs, large footstool and high quality fitted furniture, this model oozes elegance and opulence.

The dining area features a freestanding table and 4 chairs within an open plan layout – perfect for enjoying your evening meal with fresh air through the sliding patio doors.

For total peace of mind all our holiday homes and lodges come with a **COMPREHENSIVE WARRANTY**

See page 7 for further details



The high quality continues in the **Image 9** fitted kitchen comprising an integrated fridge/freezer and microwave; gas oven and grill with 5-burner hob and extractor hood as standard. Graphite worktops with black composite sink and mixer tap complete a stunning area.



The **Image 9** illustrated is the 41ft x 12ft 6in – 2 bedroom. The model shown here has châteaux grey aluminium finish with windows and doors finished in graphite which is standard on this leisure home.

Note: Deluxe bedding set, lounge scatters, TV and interior accessories are for display purposes only.



The spacious master bedroom in the **Image 9** has a kingsize bed with a feature headboard upholstered in a leather effect, matching the storage stool at the built in dressing table with large mirror. The luxury theme continues with distinctive and stylish pendant lights.



Available in choice of  
**2 or 3 BEDROOMS**  
 CAN SLEEP UP TO 6 PERSONS

For further details  
 see page:

17



The **Image 9** benefits from two bathrooms. The ensuite to the master bedroom has a full size bath with optional shower, folding shower screen and wet walling. A wash basin, WC and extractor fan complete the room.

The second bedroom has an ensuite shower room which is also accessible from the hallway. The Velux® roof-light creates an airy space with fitted wash basin, shower cubicle, WC and extractor fan.

All bathroom fittings throughout the **Image 9** are an on-trend matt black finish.

If you're looking for the ultimate luxury in a holiday home, the **Image 9** ticks every box.



*A glass of bubbly at the end of a hard day enjoying yourself. With the Image 9 you get used to the luxury lifestyle.*



Model illustrated 41ft x 13ft – 2 bed

**A Lounge** with sliding patio doors, 3-seater sofa, two armchairs and matching footstool as standard.

**B Kitchen** with electric oven, grill, 5 burner hob and extractor hood, integrated fridge/freezer and microwave.

**C Dining Area** with freestanding dining table and upholstered chairs.

**D Main Bathroom** with Jack and Jill access from twin bedroom has a Velux® rooflight, fitted wash basin, shower cubicle, WC and extractor fan.

**E Twin Bedroom** with two 3ft single beds, bedside table with overbed wall light between the beds and wardrobe with ensuite access to shower room.

**F Master Bedroom** with kingsize bed, leather effect wall mounted headboard and feature pendant lights.

**G Ensuite** with fitted wash basin, optional shower over bath, bath screen, fitted washbasin, WC and extractor fan.



## STANDARD FEATURES

### Lounge

Freestanding suite (with pull out bed)	✓
Two arm chairs	✓
Lounge scatter cushions	✓
Lounge footstool	✓
Vertical blinds to front aspect	✓
Coffee table	✓

### Kitchen

Integrated fridge freezer	✓
Integrated microwave	✓
Electric oven and grill	✓
5 burner hob with electric extractor hood	✓
Soft close hinges on doors	✓
Velux roof light	✓

### Dining Area

Freestanding dining table and chairs	✓
--------------------------------------	---

### Bathroom(s)

Ensuite bath/shower room to bedrooms (in 2 bedroom model)	✓
Ensuite WC (in 3 bedroom model)	✓
Towel radiator	✓

### Master Bedroom

Overbed reading lights	✓
TV points to master (with signal booster)	✓
Kingsize lift-up bed	✓
Lift-up storage double bed	✓

### Twin Bedroom(s)

3ft single beds (in 2 bedroom model)	✓
TV point (with signal booster)	✓
Overbed reading lights	✓

### Throughout

Central Heating	✓
Extra insulation	✓
Sockets with USB port	✓
Low energy lighting	✓

### Exterior

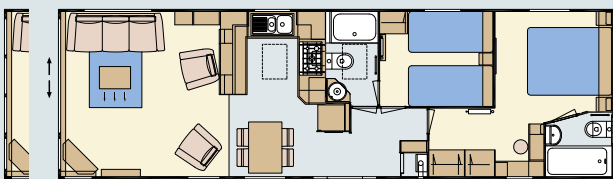
Pre-galvanised chassis	✓
Front sliding patio doors	✓
Downlights x2	✓
Graphite PVC double glazing	✓

## POPULAR OPTIONS

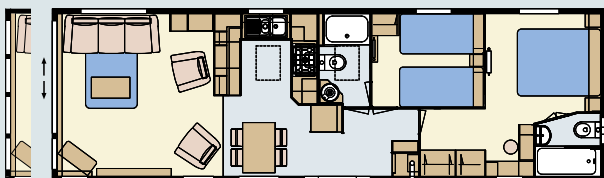
Fully galvanised chassis	
Environmental colours	
Canexel cladding coloured windows	
Timber cladding oak windows	
Integrated dishwasher*	
Integrated washer/dryer*	
Integrated washing machine*	
7 bottle wine cooler	
Wall mounted tv point in lounge	
Coffee table	
Gazunder twin bed	
Standard bedding set	
Deluxe bedding set	
Shower over bath	
Shower cubicle in lieu of bath	

\*Only 1 full size appliance per model

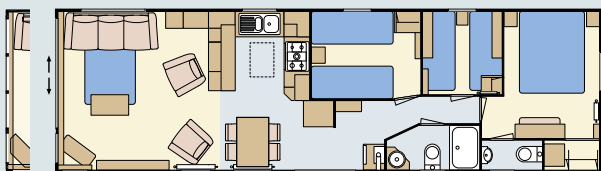
## FLOOR PLANS



41 x 12-6 – 2 bedroom/6 berth



41 x 13 – 2 bedroom/6 berth  
BS3632: Residential Spec



41 x 12-6 – 3 bedroom/8 berth

Please take a moment to choose which options you would like to be included in your new Atlas Image.

You can tick the appropriate box, which will help you specify your new holiday home.

Please see the matrix on page 66 for a comprehensive list of options.