



## HERITAGE 4

With its 7ft side walls and feature aspect windows, the **Heritage 4** has an exceptionally light and airy living space. The freestanding 2 and 3-seater sofas feature luxurious deep button arms and

the contemporary fire surround houses a log burner style fire cabinet.

The dining area adjoining the kitchen has a light wood freestanding table with 4 cream wood dining chairs.

For total peace of mind all our holiday homes and lodges come with a **COMPREHENSIVE WARRANTY**

See page 7 for further details



The spacious open plan kitchen in the **Heritage 4** features stunning willow green cabinets and stone-effect contrast tops. This model has an integrated oven and grill, extractor hood and fridge/freezer and black composite sink and mixer tap as standard.



**Atlas Heritage 4** illustrated is the 38ft x 12ft – 2 bedroom layout. Shown here with standard matt finish châteaux grey cladding and white PVC windows and doors. The model shown includes optional front French doors.

Note: Deluxe bedding set, lounge scatters, TV and interior accessories are for display purposes only.



The **Heritage 4** benefits from a large master bedroom with king size bed accompanied by a deep buttoned headboard and freestanding furniture in light wood with willow green fronts. The large dressing table comes complete with a tub style stool and circular mirror above.





The **Heritage 4** is available in 2 and 3 bedroom layouts with each bedroom containing two single beds with the same style furniture and headboards as the master bedroom.

The main bathroom features large shower cubicle, a fitted cabinet with wooden splash-back, counter top basin and WC.

All models in the **Heritage 4** range boast an ensuite comprising wash basin and WC to the master bedroom with selected models featuring a shower in addition.

The **Heritage 4** now comes in 7 different layouts with 12ft and 13ft widths and lengths from 36ft to 40ft including the two exciting new twin shower configurations.

This is the ideal choice for those wanting a versatile, spacious holiday home.



*The Heritage is ideal for families and the kids will love nothing more than building sandcastles on the beach.*



Model illustrated 39ft x 12ft – 2 bed with 2 showers

**A Lounge** with 2-seater and 3-seater sofas and feature aspect windows and optional French doors

**B Dining Area** with freestanding dining table and chairs.

**C Kitchen** with integrated oven, grill, extractor hood and fridge/freezer.

**D Twin Bedroom** with 2 single beds, bedside table and wardrobe.

**E Master Bedroom** with dressing table, stool and wardrobe.

**F Ensuite** with walk-in shower, wash basin and WC.

**G Main Bathroom** with counter top wash basin, shower cubicle, WC and extractor fan.



## STANDARD FEATURES

### Lounge

Freestanding three-seater suite with deep button arms (pull out bed)	✓
Freestanding two-seater suite with deep button arms	✓
Feature aspect windows	✓
Electric fire	✓
Feature fire cabinet	✓
Socket with USB port	✓
Wall mounted tv point	✓

### Kitchen

Integrated fridge freezer	✓
Electric oven and grill	✓
4 ring hob with electric extractor hood	✓
Socket with USB port	✓

### Dining Area

Freestanding dining table and chairs	✓
Feature dining pendant lighting	✓

### Bathroom(s)

Ensuite bathroom	✓
Extractor fan to main bathroom/shower room	✓

### Master Bedroom

TV point	✓
Overbed reading lights	✓
Socket with USB port	✓

### Throughout

Low energy lighting	✓
Carpet with underlay	✓

### Exterior

Matte finish châteaux grey cladding	✓
Exterior light	✓

## POPULAR OPTIONS

Winter warm pack	
Ultrawarm insulation	
Front French doors	
Fully galvanised chassis	
Pre galvanised chassis	
Upgrade to graphite windows	
Environmental colours	
Environmental colours complete with graphite windows & doors	
Rigid PVC cladding white windows	
Rigid PVC cladding colour windows	
Canoxel cladding white windows	
Canoxel cladding coloured windows	
Timber cladding oak windows	
Integrated microwave	
Integrated dishwasher*	
Integrated washer/dryer*	

Integrated washing machine*	
Wine cooler (13ft models only)	
Coffee table	
Lounge footstool	
Lounge scatter cushions	
Plinth heaters & heated towel rails	
Lift up double bed (gas strut) base	
Gazunder twin bed	
TV point to twin bedroom	
Standard bedding set	
Deluxe bedding set	

\*Only 1 full size appliance per model

## WINTER WARM PACK

### to include

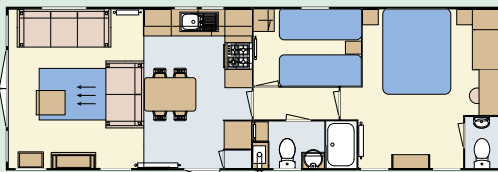
Central heating	
Double glazing	
Extra insulation	

**Please take a moment to choose which options you would like to be included in your new Atlas Heritage.**

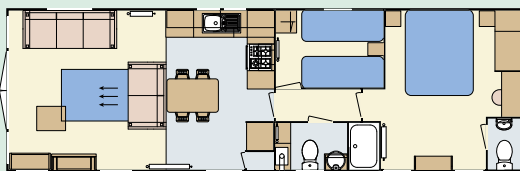
You can tick the appropriate box, which will help you specify your new holiday home.

**Please see the matrix on page 66 for a comprehensive list of options.**

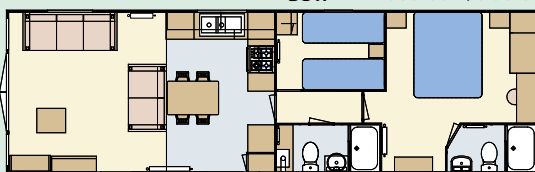
## FLOOR PLANS



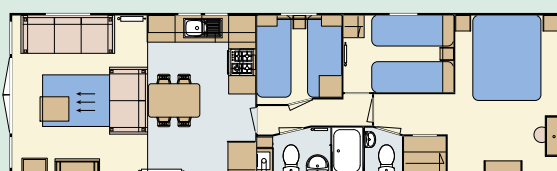
36 x 12 – 2 bedroom/6 berth



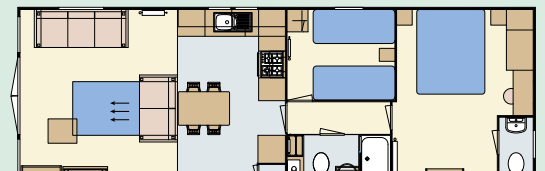
38 x 12 – 2 bedroom/6 berth



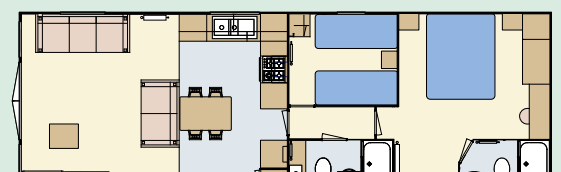
39 x 12 – 2 bedroom/6 berth – 2 shower



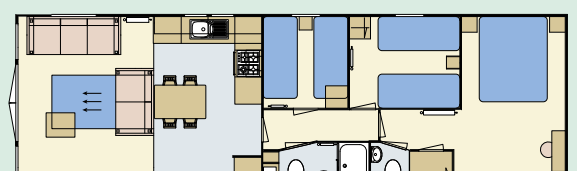
40 x 12 – 3 bedroom/8 berth



38 x 13 – 2 bedroom/6 berth



39 x 13 – 2 bedroom/6 berth – 2 shower



40 x 13 – 3 bedroom/8 berth