



DEBONAIR LODGE 4

The flagship of the Atlas range, the **Debonair Lodge 4** lounge will take your breath away. Pillow back style freestanding sofas take pride of place in front of the electric stove-effect fire which nestles in the country-style fire surround.

The dining area in the **Debonair Lodge 4** features a farmhouse-style table with 4 upholstered dining chairs and a glass fronted dresser with drawers beneath creating plenty of handy storage space.

For total peace of mind all our holiday homes and lodges come with a **COMPREHENSIVE WARRANTY**

See page 7 for further details



The **Debonair Lodge 4** has a beautiful rustic kitchen with wood effect worktops, Belfast sink, country-style doors and large island unit. The range cooker adds to the country feel and is complemented by an integrated fridge/freezer, dishwasher and microwave.



Debonair Lodge 4 illustrated is the 40ft x 20ft – 2 bedroom. This model features graphite PVC windows and doors and is finished in grey rigid feather edge PVC with feature front colour panel.

Note: Deluxe bedding set, TV and interior accessories are for display purposes only.





The master bedroom in the **Debonair Lodge 4** is true luxury. A kingsize bed with upholstered headboard mounted on wood wall panelling is joined by a sizeable walk-in wardrobe with drawer and hanging space and a dressing table with stylish chair.





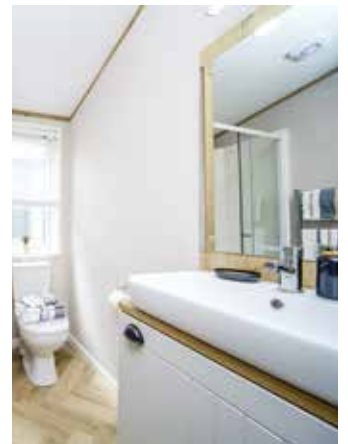
The twin bedroom in the **Debonair Lodge 4** is spacious and airy with large single beds. Featuring wall panels and headboards matching the master bedroom, there is plenty of wardrobe and storage space.

The **Debonair Lodge 4** benefits from a large ensuite bathroom to the master bedroom. This features a full size bath with shower over, bath screen, vanity unit with countertop wash basin and mirror, WC and extractor fan.

The main bathroom in the **Debonair Lodge 4** contains a shower cubicle, wash basin, WC and extractor fan.



You'll want to show everyone your stylish Debonair Lodge. And with plenty of space, invite your friends to pack their bags and come to stay.





Model illustrated 40ft x 20ft – 2 bed

- A Dining Area** with freestanding dining table, chairs and front French doors.
- B Lounge** with 3-seater and 2-seater sofas and electric stove fire.
- C Kitchen** with range cooker, integrated fridge/freezer, microwave & dishwasher and island counter unit.
- D Master Bedroom** with kingsize bed with two bedside tables and dressing table with chair.
- E Walk-in Wardrobe** complete with ample storage and hanging space.
- F Ensuite** with full size bath, shower over bath, bath screen, countertop basin, WC & extractor fan.
- G Main Bathroom** with fitted wash basin, shower cubicle, WC and extractor fan.
- H Twin Bedroom** with two large single beds and bedside table and fitted wardrobes.



STANDARD FEATURES

Residential Standard

BS3632:2015 Residential Standard

Lounge

3-seater suite with scatter cushions

2-seater suite with scatter cushions

Electric stove-effect lounge fire

TV point above fire

Freestanding furniture

Kitchen

Freestanding range cooker

Belfast Sink

Side by side integrated fridge and freezer

Integrated microwave

Integrated dishwasher

Dining Area

Freestanding dining table and chairs

Bathroom(s)

Towel radiator

Full size bath

Extractor fan to main shower/bathroom and ensuite

Shower over bath with wet wall and bath screen

Master Bedroom

Walk in wardrobe

Divan beds

TV point (with signal booster)

King size mattress

Twin Bedroom(s)

Divan beds

TV point (with signal booster)

3ft single mattress

Throughout

Central heating

Tongue and groove feature ceiling

Low energy lighting

Sockets with USB port

Exterior

Fully galvanised chassis

Graphite PVC double glazing

Light grey feather edge cladding

Front French doors

Exterior light

POPULAR OPTIONS

Canexel cladding coloured windows	<input type="checkbox"/>
Timber cladding oak windows	<input type="checkbox"/>
Integrated washer/dryer*	<input type="checkbox"/>
Integrated washing machine*	<input type="checkbox"/>
Integrated 12 bottle wine cooler	<input type="checkbox"/>
Extra dining chairs (each)	<input type="checkbox"/>
Pull out bed to lounge	<input type="checkbox"/>
Lounge footstool	<input type="checkbox"/>
Standard bedding set	<input type="checkbox"/>
Deluxe bedding set	<input type="checkbox"/>
Shower cubicle in lieu of bath	<input type="checkbox"/>
3-seater settee in place of 2-seater	<input type="checkbox"/>

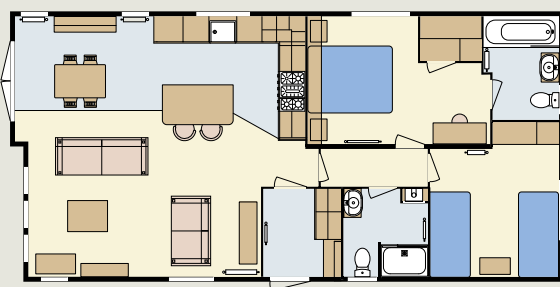
**Only 1 full size appliance per model*

Please take a moment to choose which options you would like to be included in your new Debonair Lodge.

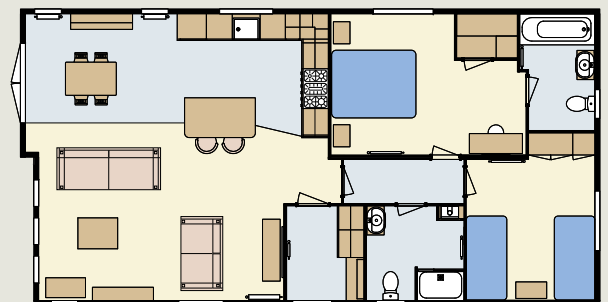
You can tick the appropriate box, which will help you specify your new holiday home.

Please see the matrix on page 52 for a comprehensive list of options.

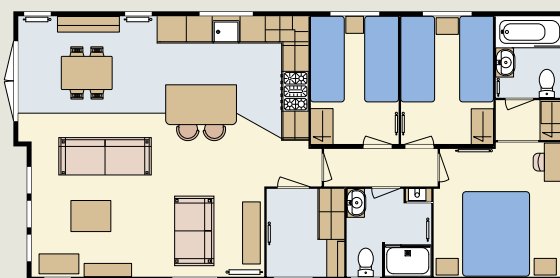
FLOOR PLANS



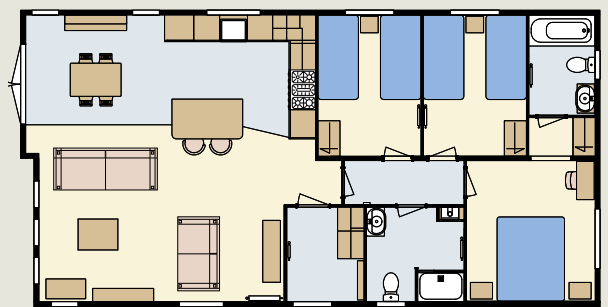
Front French Doors 40 x 20 – 2 bedroom/4 berth



Front French Doors 42 x 22 – 2 bedroom/4 berth



Front French Doors 40 x 20 – 3 bedroom/6 berth



Front French Doors 42 x 22 – 3 bedroom/6 berth