



CHORUS 6

The **Chorus 6** is a perennial favourite with its open plan living area featuring elegant L-shaped sofa with armrest featuring USB charging socket, light wood wall panels and furniture with stylish grey drawer fronts and modern electric fire.

The adjoining dining area has a freestanding light wood table top with black metal legs and coordinating black wood dining chairs. This space is separated from the entrance by a built-in shelving unit.

For total peace of mind all our holiday homes and lodges come with a **COMPREHENSIVE WARRANTY**

See page 7 for further details



The fitted kitchen in the **Chorus 6** is stunning. Its focal point is the copper coloured glass splash back with stainless steel and glass overhead vented extractor. There is an electric oven with grill, 4 ring gas hob and integrated fridge/freezer included as standard.



The **Chorus 6** illustrated is the 36ft x 12ft – 2 bedroom. It is shown here with light grey aluminium cladding and white PVC windows and doors and includes optional front French doors.

Note: Deluxe bedding set, lounge scatters, TV and interior accessories are for display purposes only.



The **Chorus 6** master bedroom is truly stunning. The graphite built in wardrobes are complemented by matching overbed storage above the kingsize bed. A dressing table with tub style stool and feature strip lighting to the headboard complete a remarkable sleep space.





The second bedroom also features graphite fitted furniture and twin beds. The **Chorus 6** has room to sleep the whole family and store all those ‘essentials’ you need when you take that well deserved break.

The **Chorus 6** comes complete with central heating, double glazing and extra insulation as standard to guarantee you’ll enjoy your time away whatever the weather has in store.

The **Chorus 6** main bathroom has a large shower cubicle, wash basin with mirrored cabinet above, WC and extractor fan.

With the exception of the 28ft model, all **Chorus 6** holiday homes have an ensuite wash basin and WC to the master bedroom.



What could be better? A family barbecue at your own holiday home. And with the Chorus, there’s plenty of room for them all to enjoy it.





Model illustrated 39ft x 12ft – 2 bed/2 shower

A Lounge with L-shaped sofa and electric fire with modern black surround.

B Dining Area with freestanding dining table and four chairs.

C Kitchen with electric oven/grill, 4 ring gas hob and extractor hood complete with integrated fridge/freezer.

D Twin Bedroom with single beds, wardrobe and feature strip lighting.

E Master Bedroom with kingsize bed, graphite colour fitted wardrobes, dressing table with stool and feature strip lighting.

F Ensuite with wash basin and WC. The 39ft x 12ft model features an additional second shower

G Main Bathroom with wash basin, shower cubicle, WC and extractor fan.



STANDARD FEATURES

Lounge	
L-shaped lounge seating (with pull out bed)	✓
Lounge footstool	✓
Kitchen	
Integrated electric oven and grill	✓
4 ring gas hob with electric extractor hood	✓
Cooker extractor vented to exterior	✓
Integrated fridge freezer	✓
Appliance shelf and socket	✓
Dining Area	
Freestanding dining table and chairs	✓
Bathroom(s)	
Ensuite to master bedroom	✓
Extractor fan to main bathroom	✓
Bedroom(s)	
Feature strip lighting to bedrooms	✓
Throughout	
Central heating	✓
Extra insulation	✓
Low energy lighting	✓
Sockets with USB port	✓
Exterior	
PVC double glazing	✓

POPULAR OPTIONS

Front French doors	
Fully galvanised chassis	
Pre galvanised chassis	
Ultrawarm insulation	
Upgrade to graphite windows	
Environmental colours	
Environmental colours complete with graphite windows & doors	
Rigid PVC cladding white windows	
Rigid PVC cladding colour windows	
Canexel cladding white windows	
Canexel cladding coloured windows	
Timber cladding oak windows	
Integrated microwave	
Integrated dishwasher*	
Integrated washer/dryer*	
Integrated washing machine*	
Coffee table	
Lounge scatter cushions	
Plinth heaters & heated towel rails	
Lift up double bed (gas strut) base	
Gazunder twin bed	
TV points & co-ax to bedrooms	
Hallway door	
Standard bedding set	
Deluxe bedding set	

*Only 1 full size appliance per model

WINTER WARM PACK

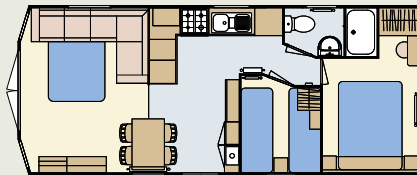
to include	
Central heating	
Double glazing	

Please take a moment to choose which options you would like to be included in your new Atlas Chorus.

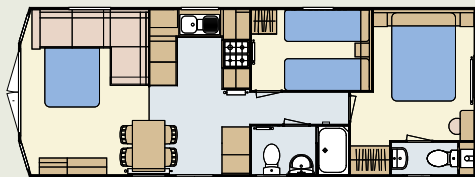
You can tick the appropriate box, which will help you specify your new holiday home.

Please see the matrix on page 66 for a comprehensive list of options.

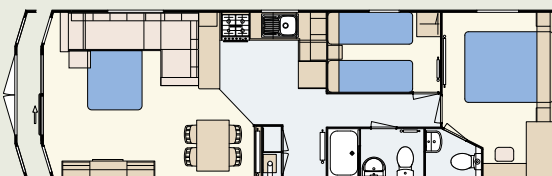
FLOOR PLANS



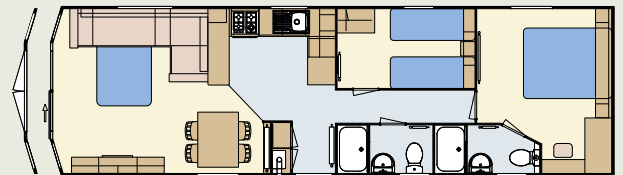
28 x 12 – 2 bedroom/6 berth



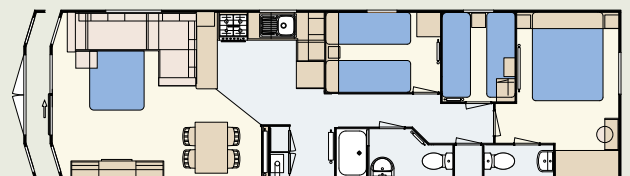
32 x 12 – 2 bedroom/6 berth



36 x 12 – 2 bedroom/6 berth



39 x 12 – 2 bedroom/6 berth – 2 shower model



40 x 12 – 3 bedroom/8 berth